

Product manual



LED 1998

1 SECURITY TIPS

WARNING!!! To reduce the risk of fire, electric shock, or injury to persons, follow these important safety instructions:

- non-professionals, not to disassemble the light arbitrarily and lighting accessories inside.
- rated voltage range: AC110V-120V/60Hz or AC200V-240V / 50HZ (to be selected).
- not beam irradiate the flammable materials, flammable materials and the lamp should be maintained at least 1M over the distance.
- lamps used in ambient temperature: $-15\text{ }^{\circ}\text{C}$ $-40\text{ }^{\circ}\text{C}$, the highest temperature of the surface of the lamp: $60\text{ }^{\circ}\text{C}$.
- to keep away from the liquid substance and humid environment.
- before using the lights must ensure the good grounding, can not install charging and remove any parts.
- the installation of lamps, must be fixed screw fasteners with additional security cable and regular inspection.
- lamps consecutive working hours is not recommended more than 10 hours.
- should stop using the lights in time when happens unusual conditions during the process
- lamp parts of the rotation, external accessories and paste parts should be regular inspected, such as the emergence of loose and rock, should be reinforced in a timely manner to prevent the accident.
- lamps adopt strong winds to refrigerate, it is easy to accumulate the dust, so you have to clean it weekly especially the cooling air opening, otherwise the dust will plug leading to poor light

2 TECHNOLOGY REFERENCE

Power supply : 100-240V 50/60Hz

Power : 850W

LAMP SOURCE:19×40W Osram RGBW LEDs,

LED Average Life : 50,0000 h

Zoom : 4°-60° Electronic Zoom Range

Individual LED control for each parameter

DMX Modes : 22CH Standard , 79CH Extended , 98CH EXTENDED
RGBW, 36CH SHAPES

Pan : 540° , 16 bit

Tilt : 270° , 16 bit

0-100% linear electronic dimmer

Adjustable speed stop/strobe effect, with instantaneous blackout

Three operating modes: wash, beam, FX (Kaleido effects)

Bi-directional Rotating Front Lens

Digital Wash-Beam Framing effect

Beam edge softening control (in Wash mode)

Pixel Patterning Macros with enhanced control

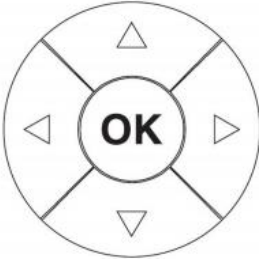





DMX signal connection: 3 Pin XLR input and output

Power Con In and Out

Net Weight : 20.7KG

Size:450*330*490

3 Board Instruction

	 Confirm the key
	 Next / reduced value DOWN
	 Previous / increased value UP
	 Left key / menu LEFT
	 Right click / fast rotate the screen for 180 degrees

Main Menu	DmxAddr	001 - 512	
	Fixture	Ch Mode	22CH /36CH/79CH/98CH
		Run Mode	DMX / AutoX
		Pan Invert	Close/ Open
		Tilt Invert	Close/ Open
		Fan Control	Norma/Low/Quiet/High
		Dim Curve	Line/Curv/S-Cur
		Dim Fast Close	Close/ Open
		No DMX State	Clear/ Keep
		Manual	Red
	Red Fine		000 - 255
	Green		000 - 255
	Green Fine		000 - 255

	Information	TimeInfo	Current Time
			Total Time
			Power Count
		SenSor	Pan
			Tilt
			Zoom
			ZoomRot
		Soft Ver	Panel
			Motor
			Dimmer
	Network		
	Factory	Password	000 - 255
Pan		000 - 255	
Tilt		000 - 255	
ZoomRot		000 - 255	
Zoom		000 - 255	
Red		000 - 255	

	
	
	FixReset	All Reset	Cance/Run
		Factory	Cance/Run
	Display	Language	CH / EN
		Display Flip	Normal/Reverse
		Display Mode	60s / Show
	Net Setting	Protocol	ArtNet/Sacn
		K1ingNet	Disable/Enable
		Universe	000 - 255
		Ip Address	000.000.000.000
		Subet Mask	000.000.000.000

4 DMX CHANNEL SHEET

STANDARD

CHAN- NEL	CHANNEL MODE
1	Red
2	Red fine
3	Green
4	Green fine
5	Blue
6	Blue fine
7	White
8	White fine
9	Linear CTO
10	Macro colour
11	Strobe

12	Dimmer
13	Dimmer Fine
14	Pan
15	Pan Fine
16	Tilt
17	Tilt Fine
18	Function
19	Reset
20	Zoom
21	Zoom Rotation
22	Frequency (if standard + frequency mode is selected)

EXTENDED

CHAN- NEL	CHANNEL MODE
1	Red
2	Red fine
3	Green
4	Green fine
5	Blue
6	Blue fine
7	White
8	White fine
9	Linear CTO
10	Macro colour
11	Strobe
12	Dimmer

13	Dimmer Fine
14	Pan
15	Pan Fine
16	Tilt
17	Tilt Fine
18	Function
19	Reset
20	Zoom
21	Zoom Rotation
22	Red Led 1
23	Green Led 1
24	Blue Led 1
...	Red Led...
...	Green Led...
...	Blue Led...
76	Red Led 19
77	Green Led 19
78	Blue Led 19
79	Frequency (if shape + frequency mode is selected)

EXTENDED RGBW

CHAN- NEL	CHANNEL MODE
1	Red
2	Red fine
3	Green

4	Green fine
5	Blue
6	Blue fine
7	White
8	White fine
9	Linear CTO
10	Macro colour
11	Strobe
12	Dimmer
13	Dimmer Fine
14	Pan
15	Pan Fine
16	Tilt
17	Tilt Fine
18	Function
19	Reset
20	Zoom
21	Zoom Rotation
22	Red LED 1
23	Green LED 1
24	Blue LED 1
25	White LED 1
26	Red LED 2
27	Green LED 2
28	Blue LED 2

29	White LED 2
...	Red LED ...
...	Green LED ...
...	Blue LED ...
...	White LED ...
94	Red LED 19
95	Green LED 19
96	Blue LED 19
97	White LED 19
98	Frequency (if shape + frequency mode is selected)

SHAPES

CHAN- NEL	CHANNEL MODE
1	Red
2	Red fine
3	Green
4	Green fine
5	Blue
6	Blue fine
7	White
8	White fine
9	Linear CTO
10	Macro colour
11	Strobe
12	Dimmer

13	Dimmer Fine
14	Pan
15	Pan Fine
16	Tilt
17	Tilt Fine
18	Function
19	Reset
20	Zoom
21	Zoom Rotation
22	Shape Selection
23	Shape Speed
24	Shape Fade
25	Shape R
26	Shape G
27	Shape B
28	Shape W
29	Shape Dimmer
30	Background Dimmer
31	Shape Transition
32	Shape Offset
33	Foreground Strobe
34	Background Strobe
35	Background Select
36	Frequency (if shape + frequency mode is selected)

5 FIXED EQUIPMENT

Please keep the equipment far away from the flammable objects like finishing material, etc. keep at least 0.5m distance from the flammable objects.

Warning: using two lamp clamps fix the equipment on the bottom of the lamp holder according to the instruction. to make sure the place of install the lamp is safe and suitable ,and the installation point that have chosen is safety and reliable.

The place of installing the lamp must support the 10 times weight of the lamp itself. And test the pensile place and make sure the place isn't out of the shape.

Must install the second protection when fixing the equipment like proper protective screening. The second protection is used to prevent drop off and lost of lamp and components.

Lamps can directly install the lamp holder , which is shown in the

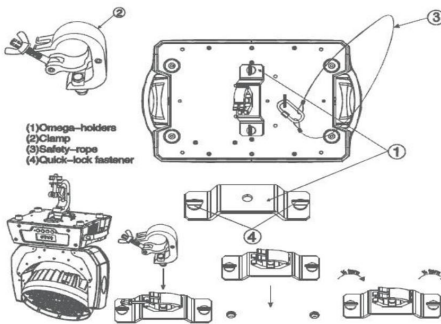



figure:

6 MAIN MACHINE CONNECTION

Please checking the power equipment supported.

Please put the plug of power source wire connect with the main power source .

(EU)Wire	Wire(America)	Direction of wire	General marks
Brown	Black	Live	L
Light blue	White	Neutral	N
Yellow/Green	Green	Earth	



Warranty Card

Name	Model
------	-------

Production	Purchase
------------	----------

End User
Company Name:
Add:

Sale Store	
Link man:	Stamp
Tel:	

Description: These must be truthfully fill, seal by the end-user and point-of-sale, or else the warranty will not work (warranty period and terms, see the following)

warranty period: one year since purchase warranty terms: 1、 If fail when using the product in normal state, you can made under the provisions of the warranty, show the warranty card and purchase bills(copy), and enjoy free maintenance service in a specific service center or the manufacturer.

2. The following will be the implementation of paid service:

- (1)Without the effective warranty card
- (2)There's blank, alter and no point-of-sale name
- (3)Fail caused by unresistance
- (4)Fail caused by transportation or unloading
- (5)Fail caused by not operate by manual
- (6)Fail caused by disassemble without unauthorized
- (7)Fail caused by using the unauthorized control system

Note:

Based on our company continue to improve the product, the statement containing data may have changed, and will not notice the change any more. Company retains its right to change specifications related when product is improved. Thanks for your understanding.